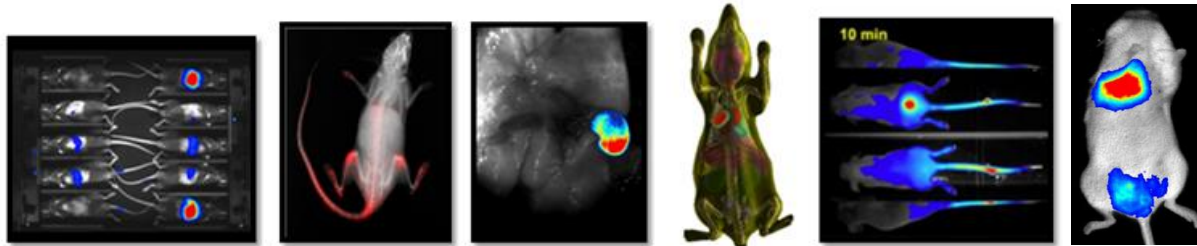


# Optimize your applications with the *in vivo* real-time PhotonIMAGER OPTIMA

Joëlle TCHICAYA, PHD, Biospace Lab Application engineer  
2<sup>nd</sup> July 2024, 9.30–11.00

Le lien de connexion TEAMS sera envoyé suite à l'inscription auprès de :  
[sophie.desnoulez@inserm.fr](mailto:sophie.desnoulez@inserm.fr)



- **Unmatched Sensitivity** (37ph/s/sr/cm<sup>2</sup>)
- **Co-detection** of tumor & micro-metastasis
- Quantify accurately by **monitoring signal kinetics**
- Follow *in vivo* **fast processes monitoring** (Temporal Resolution: 89ms)
- Bioluminescence, visible and NIR-I fluorescence
- Modular : XRAY, 3D, multiViews, moving animals, zoom down to 2,5µm, 10 mice